

# Come with Me

*Andante* ♩ = 84

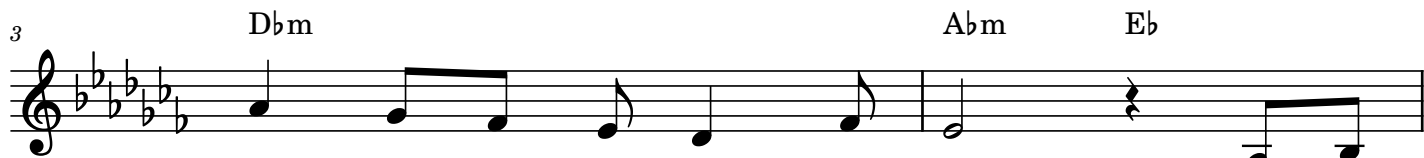
A♭m

E♭

A♭m



When it's dark, light a can - dle for kind - ness; when it's  
(We have) spent ma - ny days, ma - ny hours, fear - ing



dark, light a can - dle with love. when it's  
those that would tear us a - part. Light a



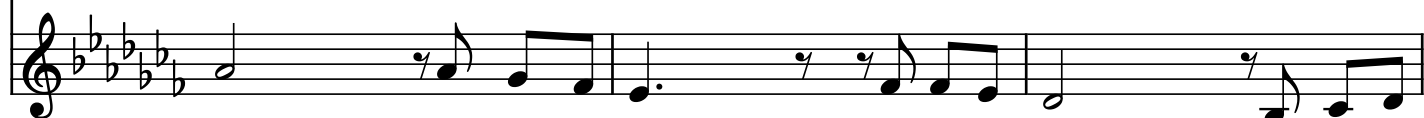
dark, light a can - dle for me and for you. Light a  
can - dle and count - er the hate and the fear, and with



can - dle; its light will see us through. Come with  
cour - age we'll face the day a - new.



Come with me, let's shine the light, for in our hands



me, let's shine the light, for in our hands lies hope to-

## Arrangement Permissions

- 👉 One-time Adaptation
  - 👉 New Arrangement OK
  - 👉 Seek permission to arrange
- Look at the *Sing Out Love* "Permissions" section for further explanation

*Come With Me - 2*

12 C $\flat$  D $\flat$ m7 F $\flat$  G $\flat$ 7 A $\flat$ m7 To Coda

lies hope to-night. Come with me, the path is clear: A land of

-night. Come with me, the path is clear: A land of

1. E $\flat$  A $\flat$ m

15 hope is ve - ry near. We have

2. D.S. al Coda E $\flat$  A $\flat$ m B $\flat$ dim A $\flat$ m D $\flat$ m

17 peace is ve-ry near. Come with love is ve-ry near.